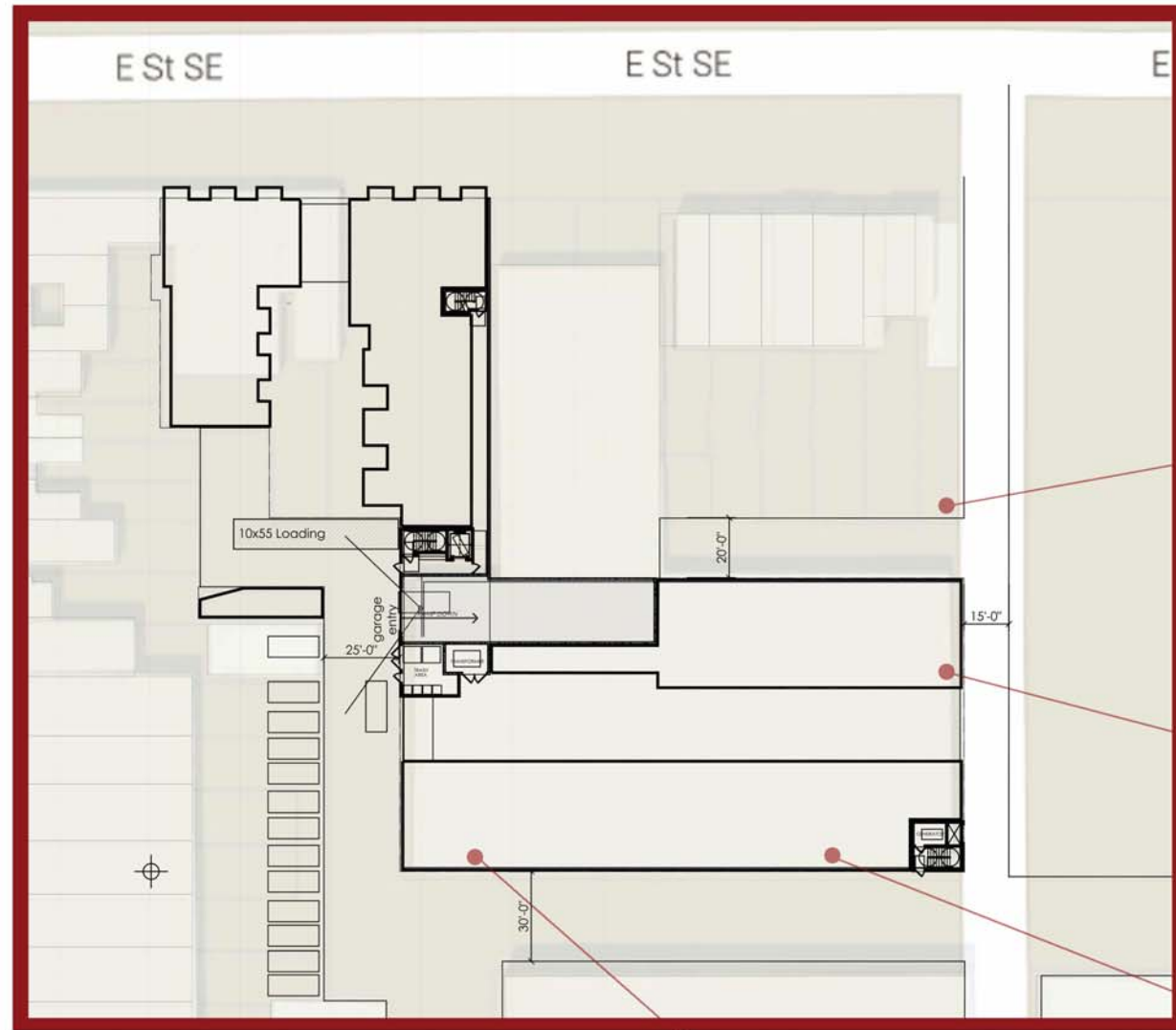


Entry as proposed -

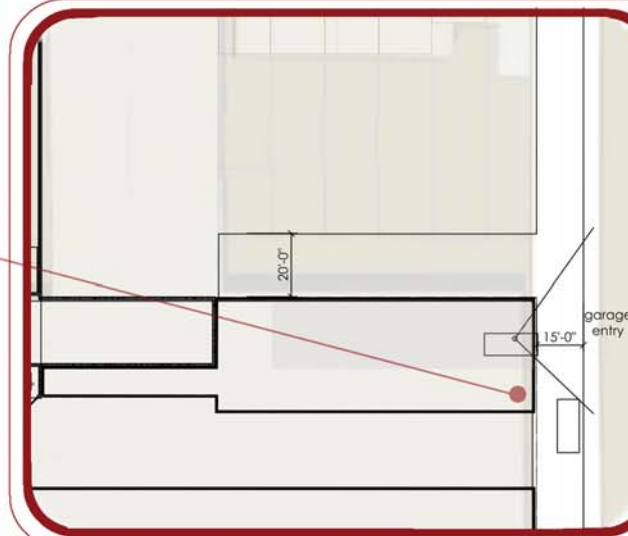
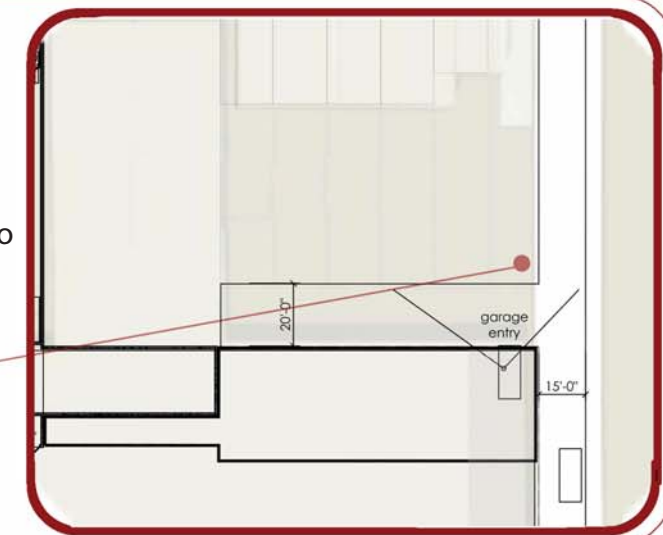
Pros:

- wide alley access
- no traffic beyond this garage
- high pedestrian visibility
- unloads with direct light blocked by our project and existing garage
- traffic limited to this project provides for safer bicycle maneuverability



Entry on Secondary Alley-  
Cons:

- Narrower Alley
- unloads with direct light into neighboring property
- limited sight trying to turn onto 15' Alley
- ramp clearance negates ability to provide open courtyard

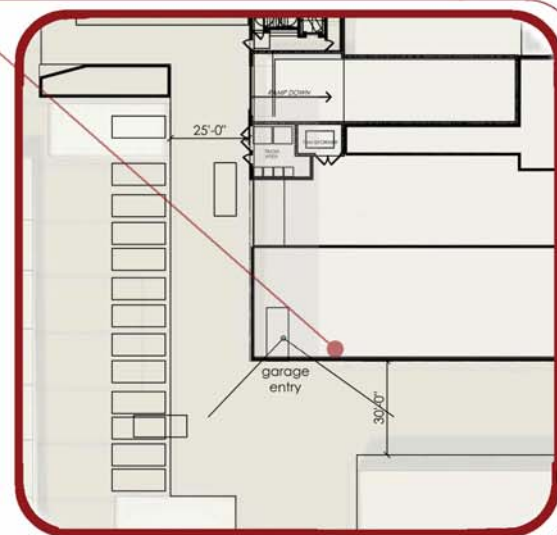


Entry on 15' Alley-  
Cons:

- Much narrower Alley
- inability to easily enter or exit
- severely limited sight at exit
- dangerous for pedestrians on small alley
- two way traffic running on existing alley

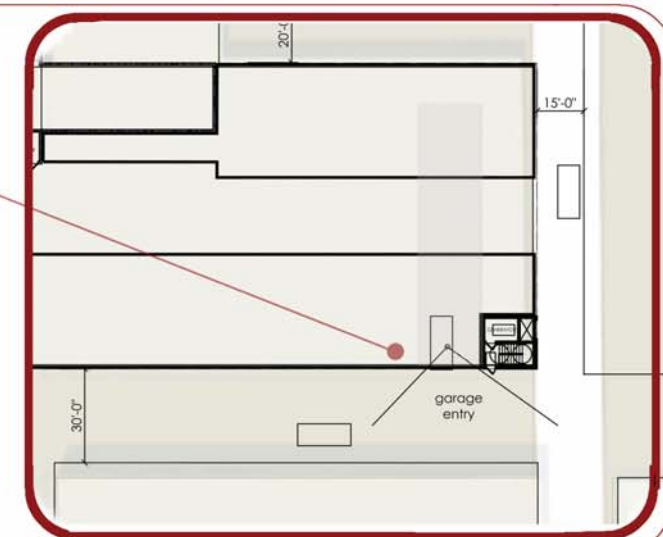
Entry on 30' Alley (west end) -  
Cons:

- two way traffic on existing alley
- ramp clearance negates ability to provide open courtyard



Entry on 30' Alley (east end) -  
Cons:

- two way traffic on existing alley
- tight maneuvering out and immediately onto 15' alley
- ramp clearance negates ability to provide open courtyard



# Analysis - Alternate Garage access points

1311 E Street, SE Washington DC 20003



30 December 2015

